

Installing the Retro Emulation file for the Revelation II

This is the install procedure how to install the Retro Emulation for the Revelation II chess computer. Please make sure that the Rabbit plugin program is not activated and the device is in normal Revelation mode. (Normal power-up)

Also make sure you are a registered user. For registration visit: www.revelationII.com. The Retro emulation software can be purchased via the DTG web shop: www.dgtshop.nl or through your point of sales (DGT dealer).

Important: The Revelation software version on your Revelation II should be 3.14 or higher. In case you have a lower version follow the instruction as defined in the document: **TD_ENG_Rev2_File update instr_Rev1** which is available on www.revelationII.com (Product registration required)

Step 1: Install the Revelation UCI Server software on your Windows computer

Note: This step may be skipped if this program is already installed on your computer.

The program can be found on www.RevelationII.com in the Download – Extra Software section. Please make sure you are a registered revelation user. Details can be found on www.Revelation.com.

Install the UCI Server and read the help files or the Revelation Manual to establish a Bluetooth connection with the Revelation II Board. ***Please be advised that the Bluetooth key for Revelation II is 1234 !!***

Step 2 : Set the options in the Revelation UCI Server

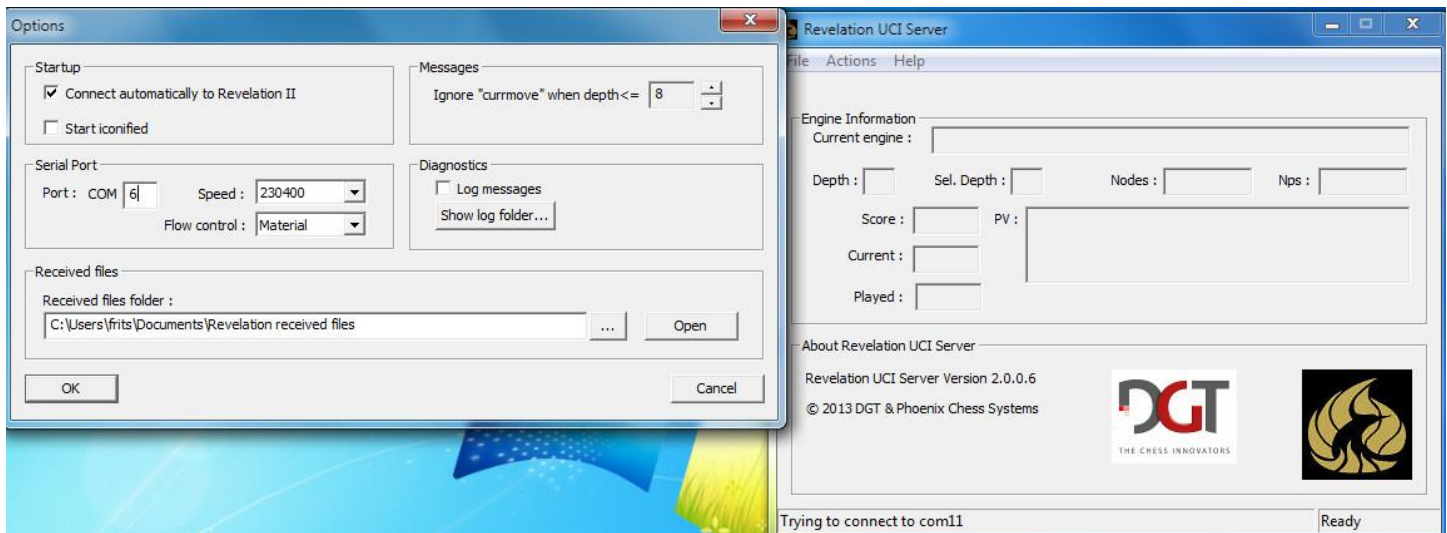


Revelation UCI Server

Start the UCI server. You will find it in the start menu or it may also have a shortcut on your desktop if you have installed this during the UCI server installation set-up.

1. From the menu bar select **File -Options**.
2. Check the outgoing port number as noted in your control panel and allocated to the Revelation II.
3. Select this com port in 'Port .. '. For example if com6 is your **outgoing** port (from pc to Revelation II Board) enter the number 6.
4. Speed : 230400
5. Flow Control : Material
6. Confirm with the OK button

You only have to set these options once. See below figure for details:



Step 3: Connect the Revelation II to the UCI server

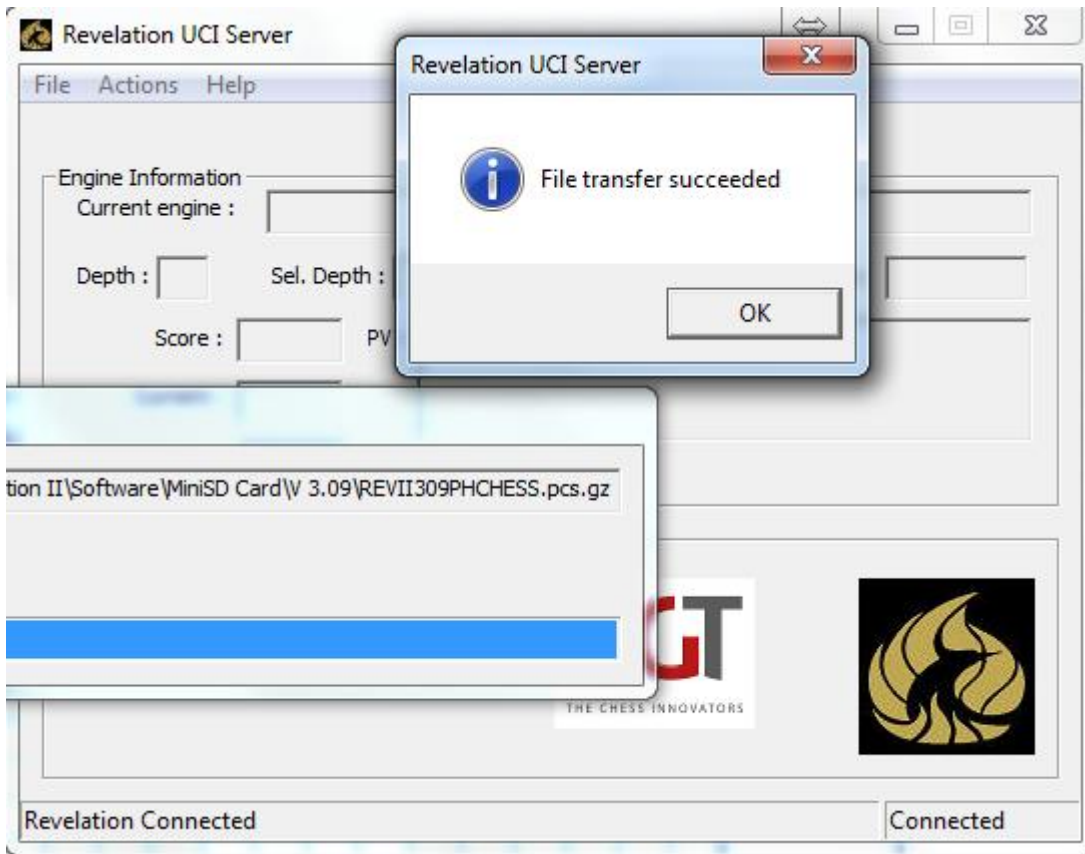
From the menu bar select **File – Connect to Revelation II**, if it is not already connected.

After a short while you will see at the bottom of the window: “Revelation Connected”

The Retro update file (example: REVII_LIC-01_01XXXX.pcs) will be supplied to you via email after purchase. XXX stands for the serial number of your Revelation II.

In the menu bar select **File - Send file to Revelation II Board**. A file Open window will appear, navigate to the location in which you saved the received file and select the file. Click on the “Open” button or double-click the filename.

The file transfer will start, which will also be visible in the Revelation II display. Depending upon the size it may take some time to transfer the file. For a save transfer do not use your PC for other purposes.



Step4: Unpacking the Retro update file

When you see the message that the file transfer was successful (and after sending all files indicated), switch off your Revelation II and switch it on again. You can use the soft off (CLEAR+ENTER)/soft on (ENTER), or unplug the system from power and power it up again.

Revelation II will show some messages that it has found an update and will install the file. Please wait until the update is ready. You will see the normal start screen after the update messages.

Step5: Selecting the Retro Emulation mode.

Put your Revelation in standby mode. (The left / lower corner LED is on) If you start up by holding the 'down' key and then pressing the "enter" key, your system will start in Retro mode. You will see a Retro screen with several Emulation modes. See for more details the Revelation II Emulation manual.

Tip: If you encounter any problems, please reboot your PC and the Revelation II. It will secure a clean environment for above procedure.

For more information on the UCI server please read the help file included with the UCI Server.

=====