

## Updating the Firmware and StockFish engine for the Revelation II

This is the update procedure on how to update the Revelation II chess computer. Please make sure that the Rabbit Plugin program is NOT activated and the Revelation is in normal Revelation mode. (Normal power-up).

### Step 1: Install the Revelation UCI Server software on your Windows computer

Note: This step may be skipped if this program is already installed on your computer.

The UCI server program can be downloaded at: <http://www.digitalgametechnology.com/index.php/support1/dgt-software/dgt-chess-computers/revelation-ii-1/372-revelation-uci-server>

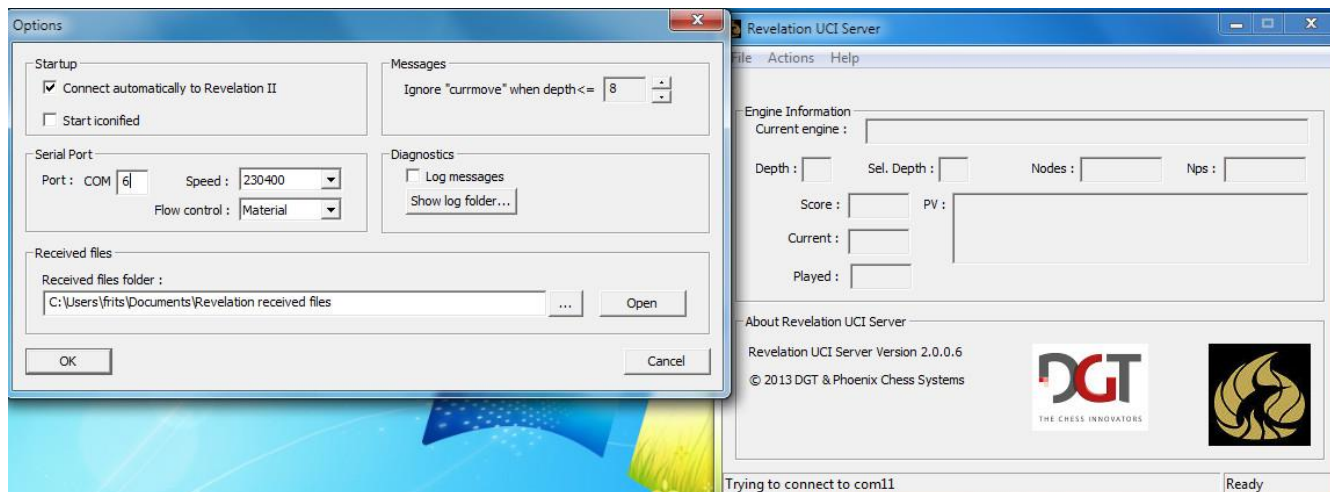
Install the UCI Server and read the help files or the Revelation Manual to establish a Bluetooth connection with the Revelation II Board. **Please be advised that the Bluetooth key for Revelation II is : 1234**

### Step 2: Set the options in the Revelation UCI Server

Start the UCI server. You will find it in the start menu or it may also have a shortcut on your desktop if you have installed this during the UCI server installation set-up.

1. From the menu bar select **File -Options**.
2. Check the outgoing port number as noted in your control panel and allocated to the Revelation.
3. Select this com port in 'Port .. '. For example if com6 is your **outgoing** port (from pc to Revelation II Board) enter the number 6.
4. Speed : 230400
5. Flow Control : None or Material
6. Confirm with the OK button

You only have to set these options once. See below figure for details:



### Step 3: Connect the Revelation II to the UCI server

From the menu bar select **File – Connect to Revelation II**, if it is not already connected.

After a short while you will see at the left bottom of the window: "Revelation Connected".

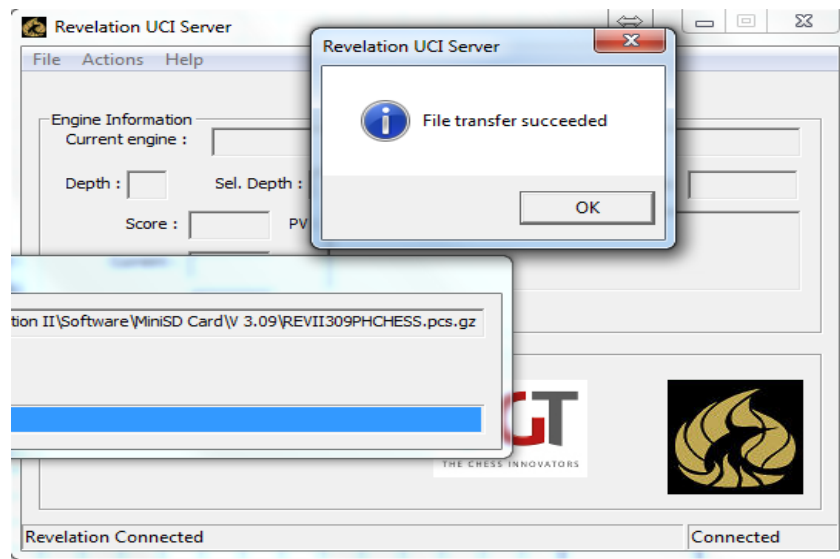
The firmware update file (firmware: REVII321PHCHESS.pcs.gz for version 3.21) and the StockFish Engine (software: REVII315SF.pcs.gz) can be downloaded at: <http://www.digitalgametechnology.com/index.php/support1/dgt-software/dgt-chess-computers/revelation-ii-1>

Download and save the file REVII321PHCHESS (software version 3.21) and the file REVII315SF on your computer.

Now select in the menu bar select **File - Send file to Revelation II Board**. A file Open window will appear. Navigate to the location in which you saved the downloaded files and select the file REVII321PHCHESS. Click on the "Open" button or double-click the filename.

The file transfer will start, which will also be visible on the Revelation Display. Depending upon the size it may take some time to transfer the files. For a save transfer do not use your PC for other purposes.

Repeat this step for the StockFish engine file: REVII315SF



#### Step 4: Unpacking the new files

When you see the message that both file transfers were successful (and after sending all files indicated), switch off your Revelation II and switch it on again. You can use the soft off (CLEAR+ENTER) and soft on (ENTER), or unplug the system from AC power and power it up again.

Revelation II will show some messages that it has found an update. Please wait until the update is extracted and ready. You will see the normal start screen, with current firmware version, after the update messages are completed.

#### Step 5: Activating the new firmware version and StockFish engine.

Your system is still running the current firmware version which is most likely 3.14. Go to the extended menu (OPTIONS=YES) and go to SELECT VERSION and press ENTER. Select here the new version 3.21 (the version number you just installed) and press ENTER. Wait until your system says 'selected' (This will be visible for a short moment so watch the screen). After selection it will return to the main screen. DO NOT SWITCH your Revelation off before the system shows the main screen!

After this step is completed, you can switch the Revelation off and switch on again. Now your Revelation II Board is running on the latest firmware version.

Again go to the extended menu (OPTIONS=YES) and to activate your new engine select the StockFish engine. Exit the menu via the ENTER key. You can now enjoy playing against the StockFish engine!

**Tip: If you encounter any problems, please reboot your PC and the Revelation. In some cases you need to reset and re-initialized the Bluetooth chip on the Revelation via the Revelation "extended menu" and then "Bluetooth menu".**

For more information please read the help file included with the UCI Server or contact DGT support at:

<http://www.digitalgametechnology.com/index.php/support1/customer-service-form>